



# CannaBusiness Laboratories, LLC

2554 Palumbo Dr. Lexington, KY 40509

## Certificate of Analysis

**Customer:**

Organic Plus Bros, LLC  
682 W Bagley Rd, A6

Berea, OH 44017

Collected Date:

Received Date: **10/21/2021**

COA Released: **10/22/2021**

Comments:

Sample ID: **211018018**

Order Number: **CB211018007**

Sample Name: **Plant Puff - Delta-8 Flower  
(Purple Punch)**

External Sample ID:

Batch Number: **#PP02100221.1300**

Product Type: **Flower**

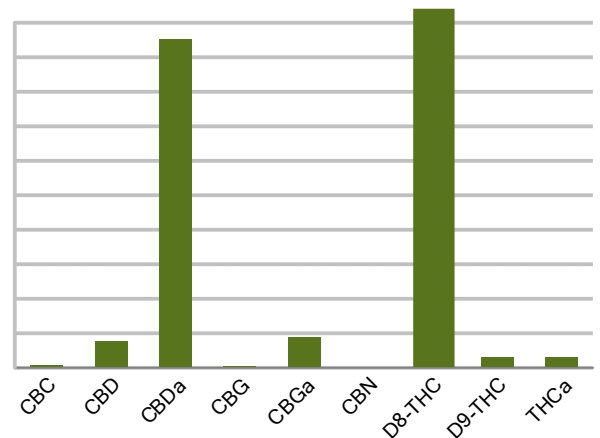
Sample Type: **Flower**

### CANNABINOID PROFILE (Product Size = 3.5 g)

Analyte	LOQ (%)	% weight	mg/g	mg/unit
CBC	0.01	0.070	0.695	2.43
CBD	0.01	0.763	7.631	26.71
CBDa	0.01	9.523	95.23	333.30
CBDV	0.01	ND	ND	ND
CBG	0.01	0.043	0.430	1.50
CBGa	0.01	0.887	8.865	31.03
CBN	0.01	0.016	0.160	0.56
d8-THC	0.01	20.91	209.10	731.85
d9-THC	0.01	0.011	0.110	0.385
THCa	0.01	0.318	3.178	11.12
<b>Total Cannabinoids</b>		<b>31.221</b>	<b>312.21</b>	<b>1092.73</b>
<b>Total Potential THC</b>		<b>0.289</b>	<b>2.890</b>	<b>10.12</b>
<b>Total Potential CBD</b>		<b>9.115</b>	<b>91.15</b>	<b>319.00</b>
<b>Total Potential CBG</b>		<b>0.821</b>	<b>8.214</b>	<b>28.75</b>



Cannabinoids (% weight)



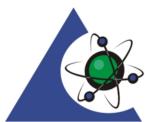
**Ratio of Total Potential CBD to Total Potential THC 15.77 : 1**

**Ratio of Total Potential CBG to Total Potential THC 1.42 : 1**

\*Total Cannabinoids refers to the sum of all cannabinoids detected.

\*Total Potential CBD = (0.877 x CBDa) + CBD. \*Total Potential THC = (0.877 x THCa) + THC. \*Total Potential CBG = (0.877 x CBGa) + CBG.

\*Total Potential THC/CBD are calculated to take into account the loss of an acid group during decarboxylation.



**PJLA**  
Testing  
Accreditation #109588

Authorized Signature

Laboratory Manager

Jamie Hobgood

10/22/2021 9:07 AM

DATE

This product has been tested by CannaBusiness Laboratories using validated testing methodologies and a quality system. Values reported relate only to the product tested. CannaBusiness Laboratories makes no claims as to the efficacy, safety or other risks associated with any detected or non-detected levels of any compounds reported herein. This Certificate shall not be reproduced except in full, without the written permission of CannaBusiness Laboratories. Uncertainty information is available on request. Photo is of sample received by the lab and may vary from final packaging. The results apply to the sample as received. ISO/IEC 17025:2017 Accredited.